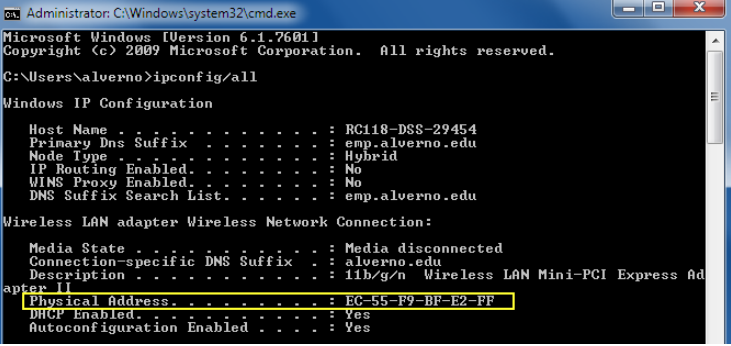
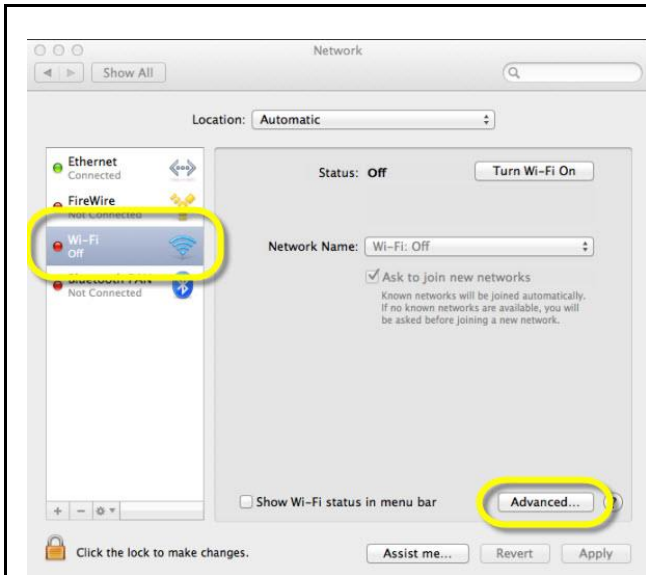


Finding your devices' MAC Address

A MAC (**M**edia **A**ccess **C**ontrol) address is a number that uniquely identifies each network adapter (wired and/or wireless) in your computing device. Depending on what operating system your device has, there are different ways to find this number. NOTE: Your MAC address will change if you replace the network adapter or the motherboard in your computer.

Screen Shot	Task
 <pre>Administrator: C:\Windows\system32\cmd.exe Microsoft Windows [Version 6.1.7601] Copyright (c) 2009 Microsoft Corporation. All rights reserved. C:\Users\alverno>ipconfig/all Windows IP Configuration Host Name : RC118-DSS-29454 Primary Dns Suffix : emp.alverno.edu Node Type : Hybrid IP Routing Enabled. : No WINS Proxy Enabled. : No DNS Suffix Search List. : emp.alverno.edu Wireless LAN adapter Wireless Network Connection: Media State : Media disconnected Connection-specific DNS Suffix . : alverno.edu Description : 11h/g/n Wireless LAN Mini-PCI Express Ad apter II Physical Address. : EC-55-F9-BF-E2-FE DHCP Enabled. : Yes Autoconfiguration Enabled : Yes</pre>	<p>Windows 10, Windows 8, Windows 7:</p> <p>Open the Start screen</p> <ul style="list-style-type: none">• In Windows 10, click on the Start menu from the bottom-left corner. or go to All Apps, Windows System Folder, Command Prompt• In Windows 8, press the Windows Start key• In Windows 7, click on the Start menu and select Run <p>Type cmd and press Enter to launch the command prompt. A black command prompt window will open.</p> <p>Type ipconfig/all and press Enter</p> <p>The MAC addresses will be listed under Wireless Network Connection (WiFi) and under Local Area connection as the Physical Address. Depending on the device, users might see multiple wireless adapters. See the Troubleshooting Tips later in this document.</p>

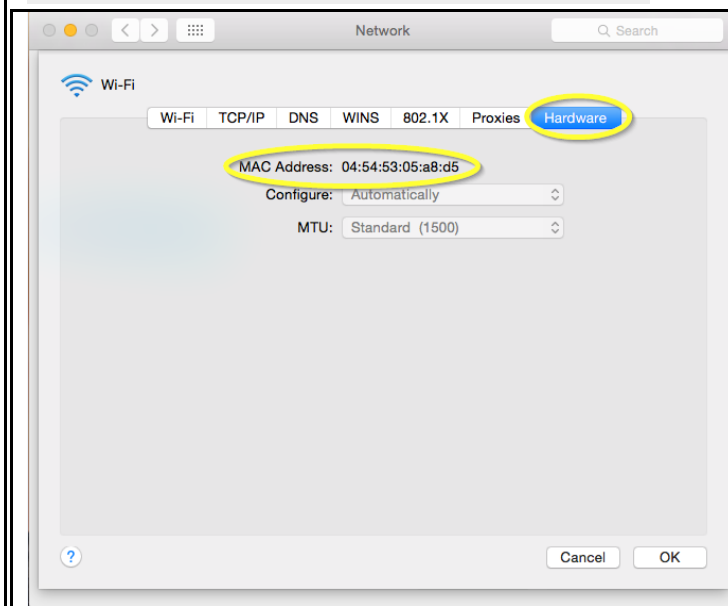


Macintosh OS 10.x Directions:

- Click **System Preferences** on the Dock
- Click **Network**

With Wi-Fi selected, click the **Advanced** button.

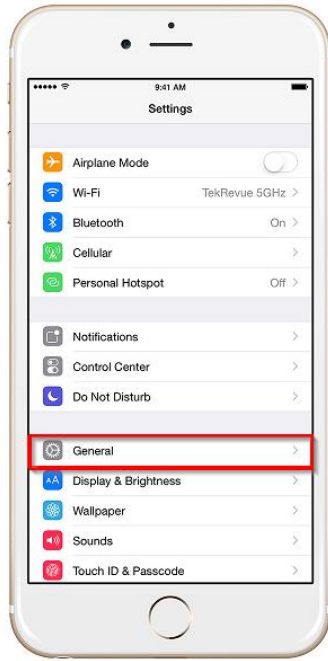
Note: if you do not have the **Wi-Fi** option, then use the option **AirPort**.



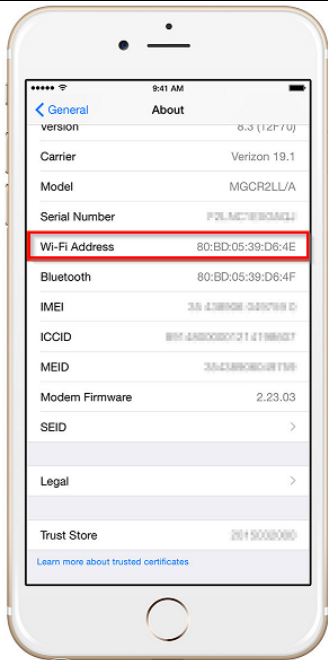
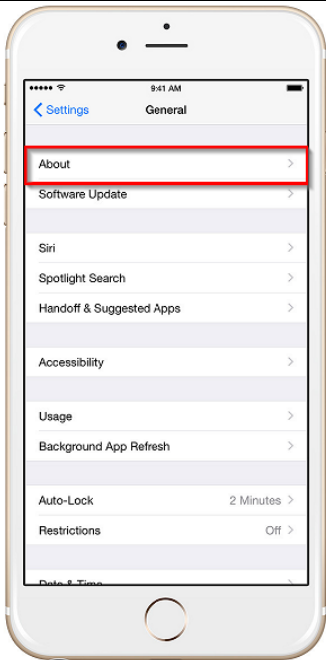
- Click the **Hardware** tab to see the MAC address.

If using the AirPort option, instead of Hardware you will see Ethernet.

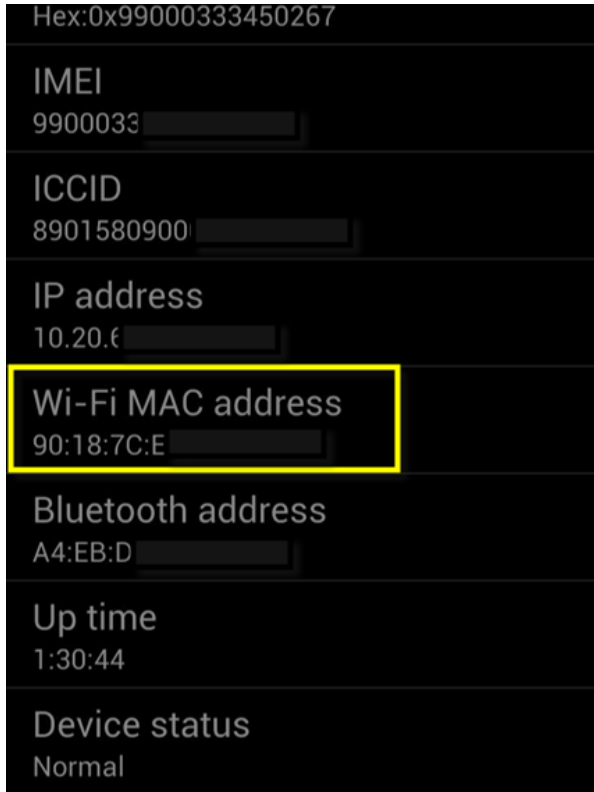
iPhone, iPad, iPod Touch Directions:



- Select **Settings** on the Home screen
- Select **General**



- Select **About**
- The MAC address is listed as **Wi-Fi Address**



Android Phone Directions:

Follow one set of instructions listed below
(instructions will vary based on phone model):

1. On the Home screen, tap the **Menu** button and go to **Settings**.
2. Tap **About Phone** or **About Device**.
3. Tap **Status**.
4. Scroll down to see your **Wi-Fi MAC address**.

Or,

1. On the Home screen, tap the **Menu** button and go to **Settings**.
2. Tap **About Phone**.
3. Tap **Hardware information**.
4. Scroll down to see your **Wi-Fi MAC address**.

Or,

1. On the Home screen, press the **Menu** key and select **Settings**.
2. Now select **Wireless and network**.
3. Select **Wi-Fi Settings**. You will find the **Wi-Fi MAC address** under the **Advanced section**.

MEID

Slot 1 Phone number

Unknown

Slot 2 Phone number

Unknown

Slot 1 IMSI

Slot 2 IMSI

Unavailable

Wi-Fi MAC address


Bluetooth address

Unavailable

Hardware version

0002

Android Tablet Directions:

1. On the Home screen, tap the  Menu key and go to **Settings**.
2. Scroll down and tap **About Tablet** then tap **Status** or **Hardware information** and then scroll down to view the **Wi-Fi MAC address**.



```
Collapse... 10 Link encap:Local Loopback
Inet addr:127.0.0.1 Mask:255.0.0.0
Inets addr: ::1/128 Scope:Host
UP LOOPBACK RUNNING MTU:16386 Metric:1
RX packets:2170 errors:0 dropped:0 overruns:0 frame:0
TX packets:2170 errors:0 dropped:0 overruns:0 carrier:0
collisions:0 txqueuelen:0
RX bytes:174027 (169.9 KiB) TX bytes:174027 (169.9 KiB)

sit0 Link encap:IPv6-In-IPv4
NOARP MTU:1480 Metric:1
RX packets:0 errors:0 dropped:0 overruns:0 frame:0
TX packets:0 errors:0 dropped:0 overruns:0 carrier:0
collisions:0 txqueuelen:0
RX bytes:0 (0.0 B) TX bytes:0 (0.0 B)

usb0 Link encap:Ethernet HWaddr 82:00:17:02:e9:8a
UP BROADCAST MULTICAST MTU:1500 Metric:1
RX packets:0 errors:0 dropped:0 overruns:0 frame:0
TX packets:0 errors:0 dropped:0 overruns:0 carrier:0
collisions:0 txqueuelen:1000
RX bytes:0 (0.0 B) TX bytes:0 (0.0 B)

wlan0 Link encap:Ethernet HWaddr 90:25:d3:39:e6:d8
Inet addr: 192.168.1.255 Mask:255.255.255.0
Inets addr: fe80::225:d3ff:fe39:e6d8/64 Scope:Link
UP BROADCAST RUNNING MULTICAST MTU:1500 Metric:1
RX packets:49215 errors:0 dropped:0 overruns:0 frame:0
TX packets:50248 errors:0 dropped:0 overruns:0 carrier:0
collisions:0 txqueuelen:1000
RX bytes:50439227 (48.1 MiB) TX bytes:9258686 (8.8 MiB)
```

Chrome Book Directions:

1. Open a browser window. In the address bar, type `chrome://system`, and press Enter.
2. Look for `ifconfig`, and then click the Expand... button next to it.
3. Look the `wlan0` section (wireless address). The MAC address will be listed as the Ethernet HWaddr